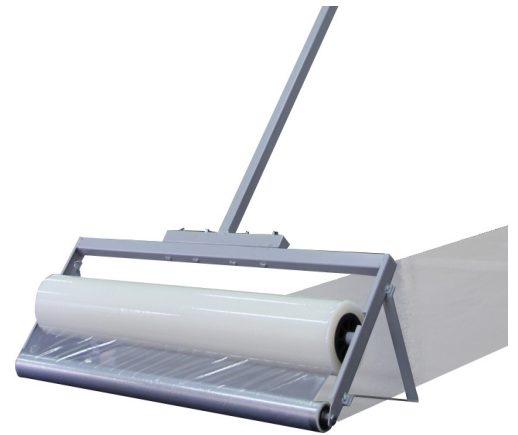


Carpet Film

Product Data Sheet

Product Code:	CS10
Product Description:	Carpet Protecta-Film (High Tack)
Colour:	Translucent
Size:	1m x 100m Roll
Description:	Transparent, self-adhesive protective film.



Technical Details:	LDPE Pressure sensitive adhesive Reverse wound Recyclable
---------------------------	--

Applications: Protecting carpeted surfaces

Create walkways on carpeted floors

Manual application or use with our Protecta-Film Applicator PFA10

Please contact Technical Sales at Protecta Group for project-specific guidance.

Usage Notes: Not for use on carpet containing natural fibres.

Maximum duty cycle is 30 days.

Before use please refer to the important information & precautions sheets supplied with product or refer to the resources section at www.protectagroup.com.au

Note: The above figures represent average values. Actual figures can vary. The purchaser is responsible to correctly select and apply product. Protecta Group reserve the right to make changes without notice to our products and specifications.